



Newsletter

26 September, 2024, Term 3, Week 10

VOLUME 15



PRINCIPAL'S MESSAGE

Dear families and community,

I can't believe it is Week 10 already! It has, as always, been an incredibly busy term. In between lots of fabulous learning, many of our students participated in Swimming Week. It was great to see how well our students are swimming and to see how happy and engaged everyone was.

A big congratulations also goes to the students who participated in The Festival of Music. It was another amazing evening and our students did us proud.

Our Year 5/6 class spent the beginning of this week on 'camp' and it was fabulous to see our students stepping outside of their comfort zones and trying new things including challenging themselves at the Tree Climb.

Our students, teachers and SSOs deserve their two week break and, as always, thank you to our families and community for all your support this term.

Happy Holidays.

Denise

Diary Dates

FRIDAY 27 SEPTEMBER
EARLY DISMISSAL AT
2.00PM.
CASUAL DAY WITH A GOLD
COIN DONATION.

HOLIDAYS

MONDAY 14 OCTOBER
FIRST DAY OF TERM 4

FRIDAY 25 OCTOBER
WORLD TEACHERS' DAY

TUESDAY 29 OCTOBER
GOVERNING COUNCIL
MEETING AT 7.00PM

MONDAY 4 NOVEMBER
YEAR 6 AQUATICS

TUESDAY 5 NOVEMBER
SPORTS DAY

✉ dl.1047.info@schools.sa.edu.au

🌐 www.modsthps.sa.edu.au

📍 8 Dampier Ave, Hope Valley

☎ 08 8264 3527

DISPOSITIONS FOR LEARNING

EMPATHETIC

In our diverse and interconnected world, fostering empathy in students is more important than ever. Empathy is the ability to understand and share the feelings of others, and it plays a crucial role in building strong relationships and a supportive school community. When students develop empathy, they learn to appreciate different perspectives, which enhances their social skills and emotional intelligence.

Empathetic learners are more likely to engage in positive interactions with their peers, creating a classroom and school environment where everyone feels valued and respected. This sense of belonging encourages collaboration and teamwork, essential skills for success in both school and life. Moreover, empathy helps students navigate conflicts more effectively, as they can better understand the emotions and viewpoints of others.

At Modbury South Primary School, we are committed to nurturing empathetic learners through various activities and programs. By incorporating discussions about feelings, role-playing scenarios, and community service projects, we encourage students to practice empathy in real-life situations. As we work together to cultivate this important disposition, we empower our students to become compassionate individuals who contribute positively to their communities. Let's continue to support our children in developing empathy, ensuring a brighter future for all!





STUDENT SUPPORT SERVICES PARENT INFORMATION SESSION

**THU, 24 OCT 2024 10:00
AM - 11:00 AM ACDT**

Join us for our first Parent Information Session to learn how Student Support Services can help meet the needs of students with additional challenges. Don't miss this opportunity to ask questions and gain valuable insights—we look forward to seeing you there!



OPEN REGISTRATION

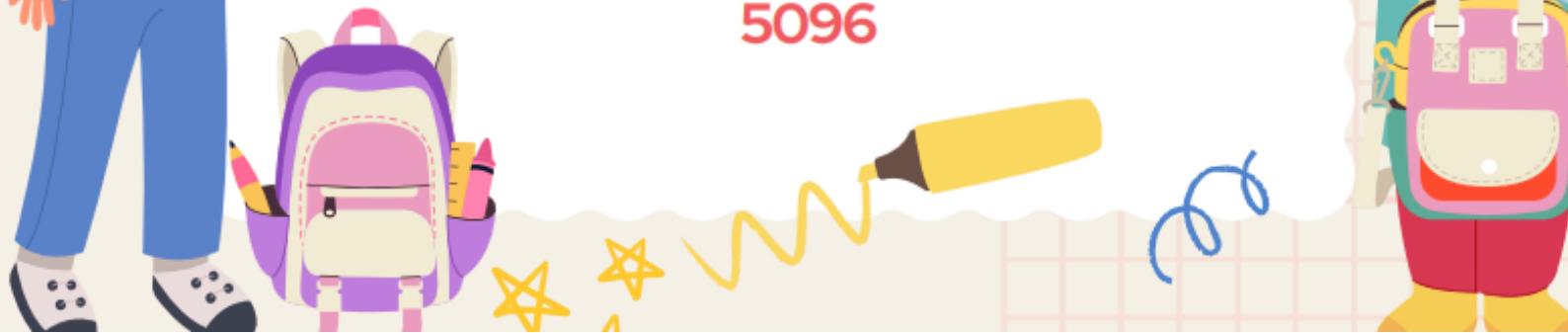


**EVENT
LASTS 1
HOUR**



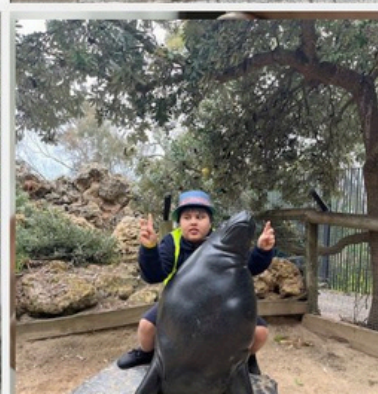
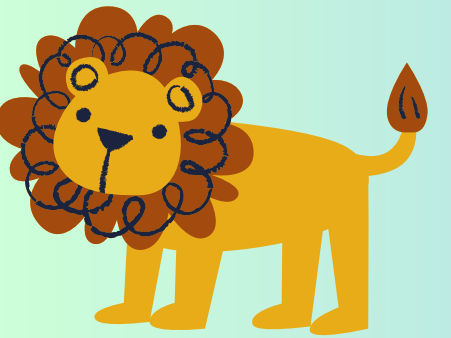
**RESERVE
A SPOT**

**Department for Education
26-34 Wilkinson Road Para Hills, SA
5096**



Room 13 - Excursion to the Adelaide Zoo

'Yesterday room 13 enjoyed a day at the zoo hosted by Variety SA. The students had a wonderful time looking at all the animals and eating their fill of the sausage sizzle and lamingtons provided'



REMINDERS:

**M&S FEES (School Fees)
must be finalised by Friday 18th
October 2024.**

**School Card 2024 will be closing
on 15th November. If you are
eligible for school card, you must
lodge your application before
this date.**

**To check your eligibility please
follow link below:**

**[https://www.sa.gov.au/topics/education-
and-learning/financial-help-scholarships-
and-grants/school-card-scheme](https://www.sa.gov.au/topics/education-and-learning/financial-help-scholarships-and-grants/school-card-scheme)**